

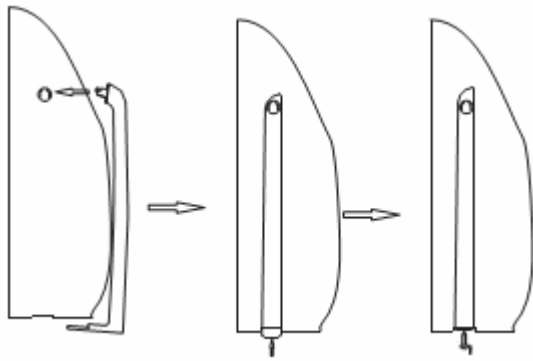


Instruction Manual

REFRIGERATOR

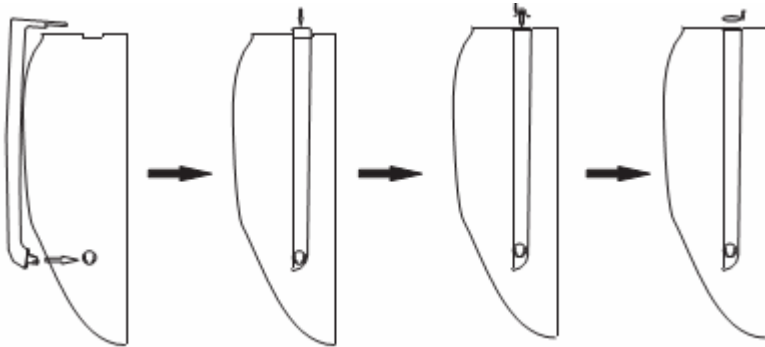
MODEL: DE-38 NF/DE-38 NF SI

Door Handle Install Illumination



Freezer door handle install: 1 put the handle's flange into the hole, another side aim at the door bottom cap groove.

2 boost up the handle, assembly tighten. 3 turn the screw till it very tight.



Bottom door handle install: the assembly way same as top door handle, the distinguish is putting into a plug lastly.

Please always follow the safety hint listed below:

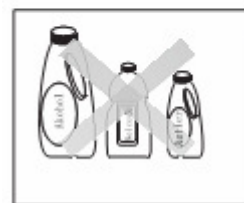
The power supply for the unit should be exactly the same as described on the date sheet, and use the standard tri-prong socket.

The unit should be operated in the absence of flammable or explosive fumes.
It is prohibited to put the flammable, acid or volatile goods in cabinet.



Please unplug the unit first when you replace the light bulb or repair the refrigerator.

Please unplug the unit immediately if you find
Any abnormal smell or smoke, and contact your
Local service centre.



Please don't allow water on the cabinet, or put a
Vessel full of water on the refrigerator. If the refrigerator
Is wet, the electrical insulation capability may be weakened.

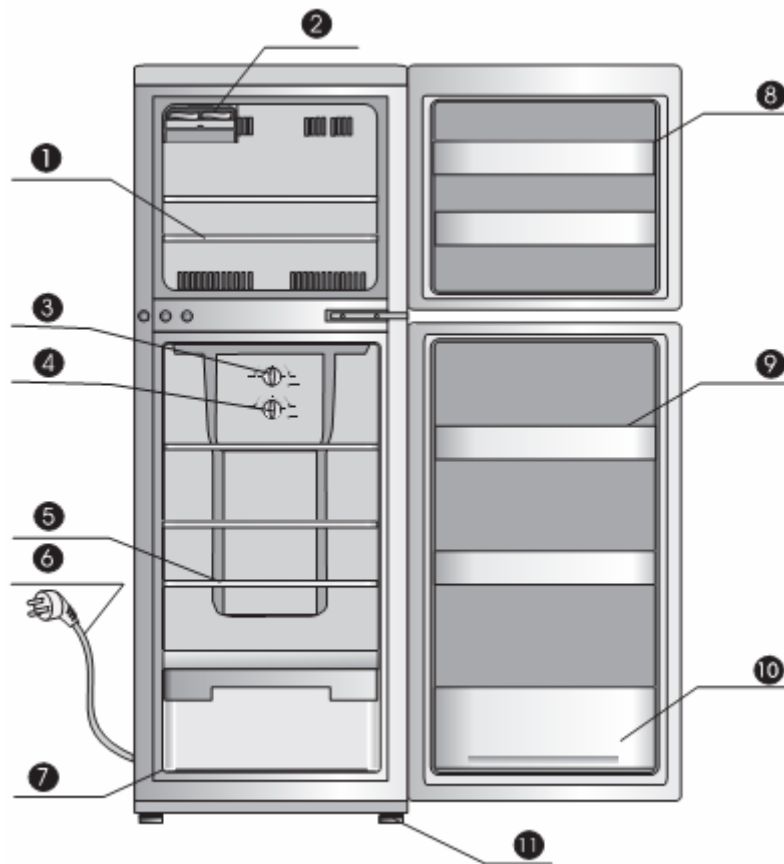


Hanging or sitting on the door is very dangerous, it
May overturn the unit and subvert the goods in (or on)
The refrigerator.



Parts

Due to the production's improvement, the unit you purchased maybe different from below sketch.



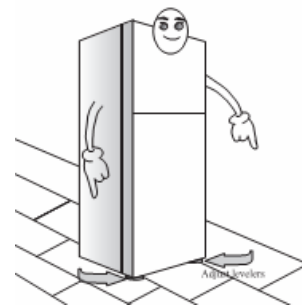
- 1 Freezer shelf
- 2 Control House refrigerator
- 3 Control House freezer
- 4 Control house refrigerator
- 5 Shelf
- 6 Power plug
- 7 Crisper
- 8 Fan switch
- 9 Freezer door tray
- 10 Fresh compartment door tray
- 11 Tilting bottle shelf

PLACEMENT

The unit should be placed in a ventilated and dry environment. Do not put the unit in direct sunshine, and keep it as far as possible from heat sources.



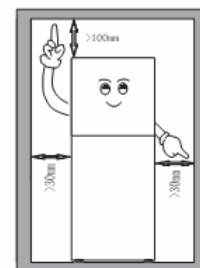
The unit should be placed on flat and steady ground. Keep the unit level by adjusting the front leg levellers.



Don't put the unit in cold area.

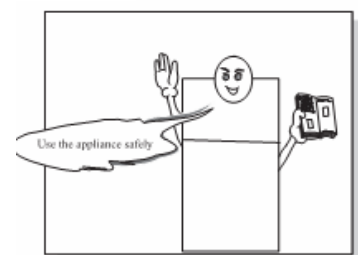


There should be enough spare space around the unit as shown, to allow proper ventilation.

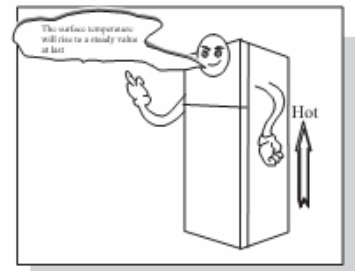


Operation Check

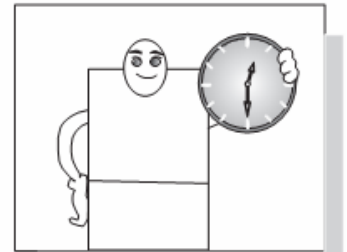
Make sure the unit has been placed properly and all instructions have been observed.



Adjust the control knob to the middle position, and then plug in the unit. .

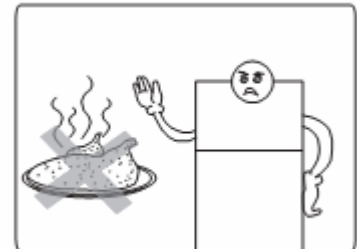


30 minutes later, open the freezer compartment door, feel the cold air, that means the unit works properly. After a period of time the thermostat will switch off & on automatically and set the compartments at the desired temperature.



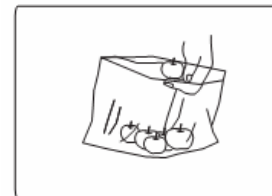
Food Storage

The temperature in the fresh compartment is between 0~10 C, although this lower temperature can limit the bacteria propagation, it is not suitable for a long period of food storage.



Fresh food storage

Cooked food should be cooled down to room temperature before putting into the refrigerator.



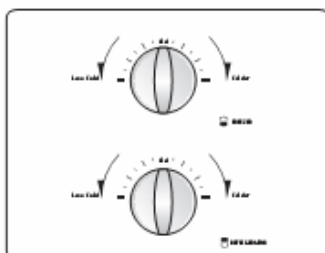
It is better to put the food in a sealed bag before placing into the refrigerator.



In order to keep vegetables fresh in the crisper, any water should be removed first, otherwise the vegetables may spoil. If you put the vegetables in a bag, they may be stored for a longer period.

Control knob

Is used to adjust the temperature of different compartment. User can adjust for desired temperature.



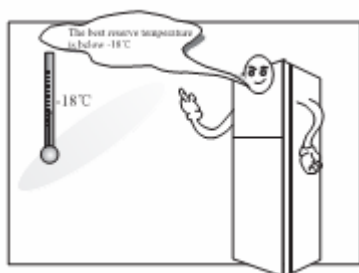
User can adjust the temperature of cooling or freezing by turn-control knob located at the back of the cooling zone cabinet. According to the above picture, the higher knob is used for controlling temperature of cooling while the lower one is for freezing. Temperature shall get lower if turning the knobs by clockwise sense while I will get higher if anticlockwise.

Attention:

When the freezer control knob is set at “7”, you can turn the control knob of the fresh food compartment to “4” or even smaller number to avoid too low storage temperature.

Frozen food storage

The temperature of the freezer is colder than -18°C . It is to store food to be kept for a long period.



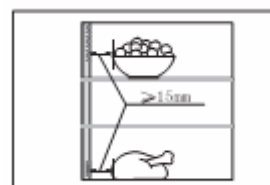
After buying frozen food, please put it into the freezer compartment as soon as possible.

Any hot food must be cooled down to room temperature before it is put into the freezer.

Please don't put glass containers filled with liquid into the freezer compartment as the liquid into the freezer compartment as the glass may break.

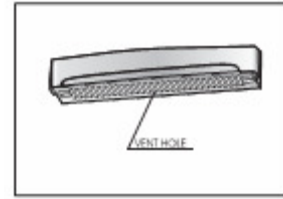
It is better to pre-sort the foods before putting them into the freezer. Put the same kinds of food together to help to minimize the time of the freezer door opening when you take the food out, and helps to save energy.

The food should not be put too close to the outlet or inlet of the airflow. It may affect the air circulation.



Door tray

There are some ventilation holes on the bottom of the door tray, please try not to block all of them when you put the food in.

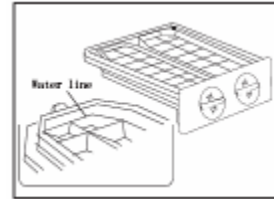


Ice tray

The ice tray is to make ice cubes.

Fill with cold drinkable water to a height of four-fifth of the ice tray ,and place it in the freezer for about 2 hours.

When the cubes are fully frozen, take the ice tray out and twist it back and forth to separate the ice cubes, don't over-bend the ice tray to avoid breaking it.



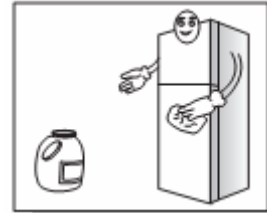
Maintenance

Cleaning

Always unplug the unit before cleaning.

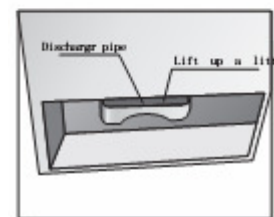
The unit should be cleaned frequently both inside and outside using water and a little neutral detergent .

never use boiling water, harsh cleaning agents, acid, alkali or benzene etc.



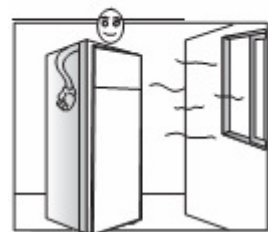
Water pan cleaning

The water pan is located in the back of cabinet. Its function is to collect and evaporate the defrost water. Usually it doesn't need special care , but if you find some water overflow or odd smell, it may need to be checked and cleaned . pull out the power cord first . lift the water pan up a little , and then pull it straight out carefully (caution make sure the discharge pipe is not too hot) after cleaning , refix the water pan into the original position . make sure that the pipe is on top of the water pan before you push it into the original position.



Leaving the unit switched off

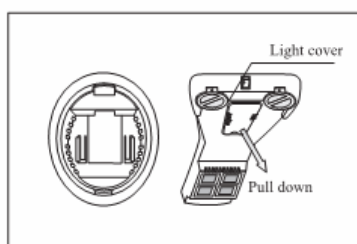
If the unit will be switched off for a long time, the plug should be pulled out , then clean the unit thoroughly .en sure that the door cannot be fully closed (leave a suitable gap), and place the unit in a well-ventilated area to avoid any odour.



Trouble shooting

Before calling for service , please check the following issues first:

Trouble	Possibility
The unit doesn't work	Power is not on. Low voltage. The control knob is set at "OFF".
The unit Works inefficiently	The control knob is set at a "low number" position. Too much food in the unit. Hot food in the unit. Door opened & closed too frequently. There is a heat source nearby. The unit is exposed to direct sunlight
Noise	Floor is not flat, and the unit is not placed steadily. Contents are not placed in the right position.
Food frozen	Is the control knob set at proper position? Too high? Is the food near the outlet of cold draught?



Change the light bulb

Before changing the light bulb, please unplug the refrigerator first, then pull down the light cover and change the light bulb according to the picture. Make sure the light bulb is 220V/50Hz/15W.

- 1) **WARNING** – Keep ventilation openings, in the appliance enclosure or in the built-in structure, clear of obstruction.
- 2) **WARNING** – Do not use mechanical devices or other means to accelerate the defrosting process, other than those recommended by the manufacturer.
- 3) **WARNING** – Do not damage the refrigerant circuit.
- 4) **WARNING** – Do not use electrical appliances inside the food storage compartments of the appliance, unless they are of the type recommended by the manufacturer;
- 5) The appliance has to be unplugged after use and before carrying out user maintenance on the appliance.
- 6) This appliance is not intended for use by persons (including children) with reduced physical, sensory or mental capabilities, or lack of experience and knowledge, unless they have been given supervision or instruction concerning use of the appliance by a person responsible for their safety.
- 7) Children should be supervised to ensure that they do not play with the appliance.
- 8) If the supply cord is damaged, it must be replaced by the manufacturer, its service agent or similarly qualified persons in order to avoid a hazard.
- 9) Please abandon the refrigerator according to local regulators for its use flammable blowing gas and refrigerant.
- 10) Disconnect the power supply before replacing the lamp.
- 11) Please according to local regulations regarding disposal of the appliance for its flammable refrigerant and blowing gas. Before you scrap the appliance, please take off the doors to prevent children trapped.

Specifications subject to change without notice